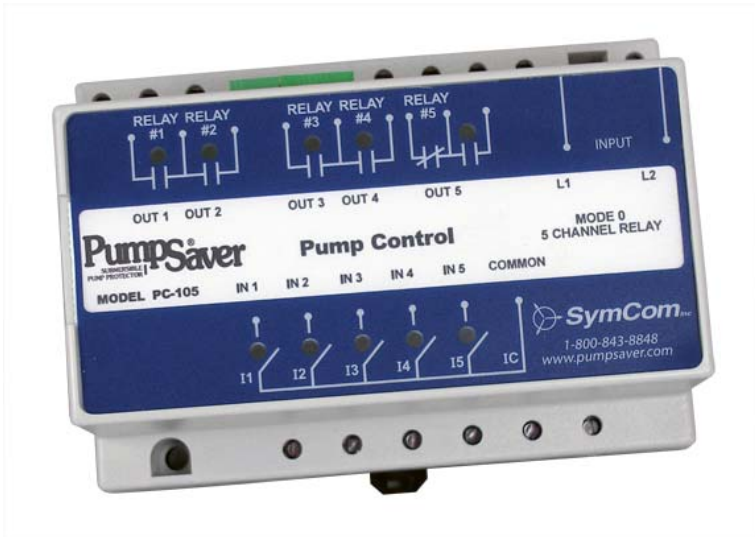


Pump Controller - Five Channel

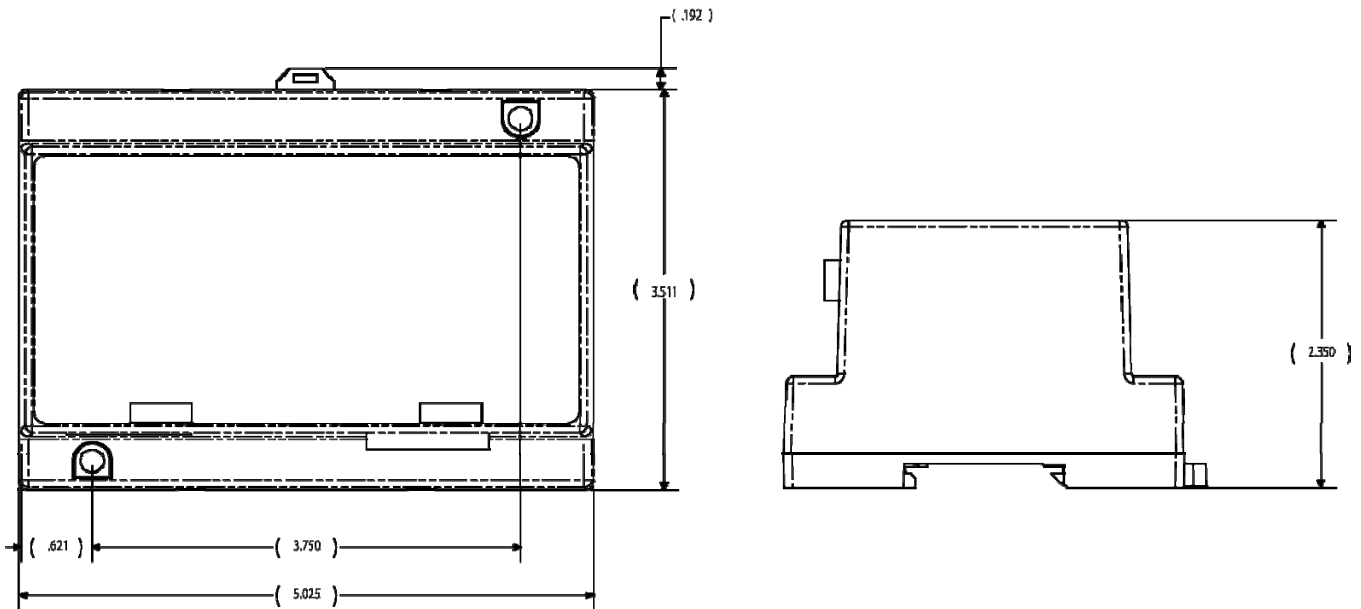
Model PC-105



SymCom's PumpControl™ Model PC-105 is a five-channel pump controller designed to handle multiple pump applications. Alternatively, it can operate as a 5-channel switch.

The PC-105s control functions support all of the popular industry-standard multi-pump configurations.

Using the built-in DIP switches, individual pumps can be disabled when taken out of service for repair or maintenance.



Dimensions in Inches

Specifications

Functional Specifications:	
Pumping modes available	
Duplex pump-down	2 pumps with high and low alarms
Triplex pump-down	3 pumps with high alarm (typical)
Quadplex pump-down	4 pumps
Duplex pump-down SPS (separate pump stop)	2 pumps with high alarm (typical) 2 stop floats
Duplex pump-up	2 pumps with high and low alarms
Triplex pump-up	3 pumps with low alarm (typical)
Quadplex pump-up	4 pumps
Duplex pump-up SPS (separate pump stop)	2 pumps with low alarm (typical) 2 stop floats
Adjustments	
Time delay/lag pump delay	2-255 sec.
Mode Selector	0 - 8 (9-F: force mode 0)
Option Selector	1 - 10, ON/OFF
Silence Button	Dry input only
Reset Button	Dry input only
External alternation configuration	ALS-1
External alternation configuration	ALS-2
5-Channel relay mode	
5-channel	1 relay latched / time delay output
Pump-to-pump start delay	2 seconds (min.)
Input Characteristics:	
Supply Voltage	120VAC nominal
Frequency	50/60 Hz
Power	4 Watts (max.)
Output Characteristics:	
Relay Output Rating	7Amps @ 240VAC General Purpose Pilot Duty 480VA @ 240VAC, B300
General Characteristics:	
Operating Temperature	-20 to 55° C
Terminals	
Wire Size	12-20 AWG
Torque	6 in.-lbs. (max.)
Standards Passed:	
Electrostatic Discharge (ESD)	IEC 61000-4-2, Level 3, 6 kV contact, 8 kV air
Radio Frequency Immunity (RFI)	IEC 61000-4-2, Level 3, 10V/m
Fast Transients	IEC 61000-4-4, Level 3, 4 kV power terminals, 2kV input/output terminals
Safety Marks	
UL	UL508 (File #E68520)
cUL	C22.2 No. 14
Dimensions	(LxWxD) 5.03" x 3.7" x 2.35"
Weight	1.2 lbs.
Mounting Methods	35 mm DIN rail or Surface Mount (#6 or #8 screws)

How to order:

Part Number: PC-105

Typical applications explained in PC-105
installation bulletin. See www.SymCom.com



www.SymCom.com

... your electronic control & protection specialists

orders@symcom.com / customerservice@symcom.com
(605) 348.5580 / (800) 843.8848 / Fax (605) 348.5685